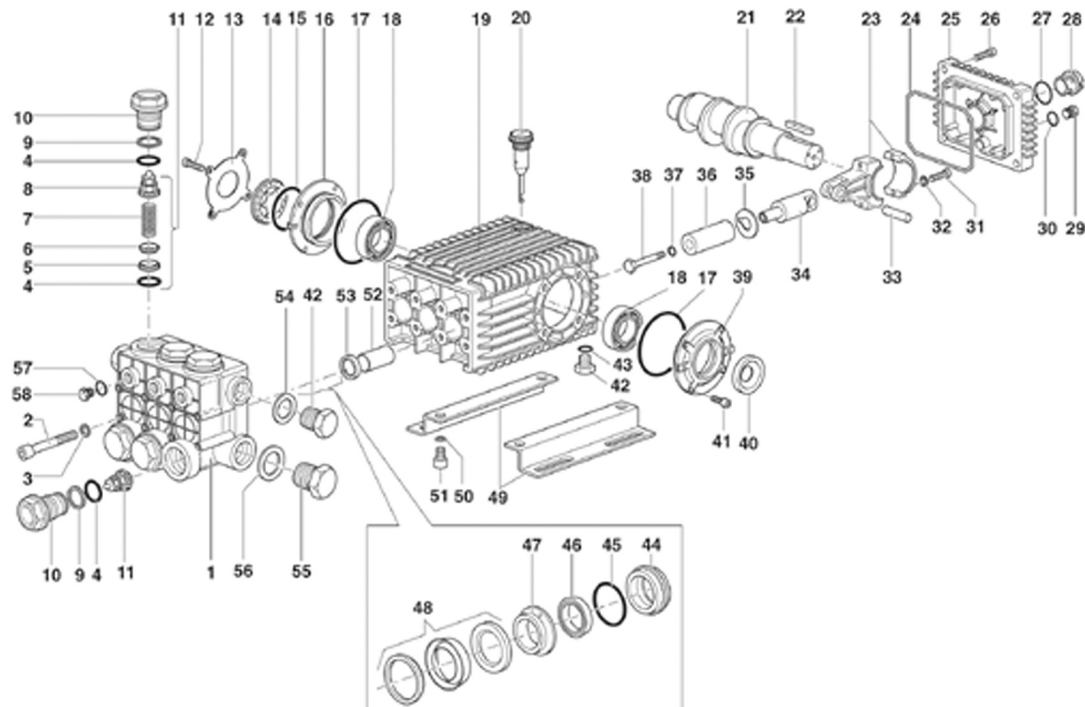


# TSF Series – Solid Shaft

**GENERAL PUMP** *A member of the Interpump Group*



## PARTS LIST

POS	CODE	DESCRIPTION	PCS	POS	CODE	DESCRIPTION	PCS	POS	CODE	DESCRIPTION	PCS
1	66120041	Manifold, 20mm	1	21	66020035	Crankshaft - 21 mm Stroke	1	42	98210000	Cap	2
1	66120141	Manifold, 22mm	1	22	91489200	Key	1	43	90383300	O-ring, .549X.103	1
2	99380100	Screw	8	23	66030001	Connecting Rod	3	44	66080170	Seal Retainer, 22mm	3
3	96710400	Washer	8	24	90392200	O-ring	1	44	66080070	Seal Retainer, 22mm	3
4	90385700	O-ring, 23.81 x 2.62	12	25	66160022	Cover, Crankcase	1	45	90361600	O-Ring 1.364 x .070	3
5	36203366	Valve Seat	6	26	99188400	Screw, M6 x 20	4	46	90271500	LP Seal, 22mm	3
6	3620	Washer	6	27	90405100	O-ring, 26.58 x 3.53	1	46	90269000	LP Seal, 20mm	3
7	94738800	Valve Spring	6	28	63210051	Sightglass, Bayonet Style	1	47	66216170	Intermediate Ring, 22mm	3
8	36203551	Valve Guide	6	29	98204100	Cap	1	47	66216070	Intermediate Ring, 20mm	3
9	90516500	Anti-Ext. Ring	6	30	701013	O-Ring	1	48	90271700	HP Seal, 22mm	3
10	66130041	Valve Cap	6	31	99309900	Screw, M8 x 35	6	48	90269200	HP Seal, 20mm	3
11	36712701	Valve Assy., Complete	6	32	96701400	Washer, M8.4	6	49	47200074	Rail, Pump	2
12	99306900	Screw	4	33	97740500	Wrist Pin	3	50	96710600	Washer, M10.2	4
13	66150274	Cover	1	34	66050064	Piston Guide	3	51	99364400	Screw, M10 x 18	4
14	44211801	Spacer, Sightglass	1	35	96710100	Flinger Washer	3	52	90912600	Bushing	3
15	90409700	O-Ring, 2.187x.139	1	36	66040109	Plunger, 22mm	3	53	90162500	Seal, Oil	3
16	66150122	Side Cover	1	36	66040009	Plunger, 20mm	3	54	96738000	Washer, M17.5	1
17	701147	O-Ring	2	37	90358400	O-ring	3	55	98226500	Cap	1
18	91838000	Bearing	2	38	66219566	Plunger Bolt	3	56	96770000	Washer, M26.5	1
19	66010022	Crankcase	1	39	66150022	Side Cover, PTO	1	57	701013	O-Ring	3
20	98210600	Oil Dip Stick	1	40	90164800	Oil Seal	1	58	98204300	Plug, 1/4" x 13	3
21	66020435	Crankshaft -19 mm Stroke	1	41	99303900	Screw, M8 x 16	4				

## REPAIR KITS

TSF2019	TSF2019-ALT	TSF2021	TSF2021-ALT	TSF2219	TSF2219-ALT	TSF2221	TSF2221-ALT
KIT K02	KIT K02	KIT K02	KIT K02	KIT K02	KIT K02	KIT K02	KIT K02
KIT K03	KIT K03	KIT K03	KIT K03	KIT K03	KIT K03	KIT K03	KIT K03
KIT K169	KIT K169	KIT K169	KIT K169	KIT K169	KIT K169	KIT K169	KIT K169
KIT K170	KIT K170	KIT K170	KIT K170	KIT K172	KIT K172	KIT K172	KIT K172
KIT K171	KIT K171	KIT K171	KIT K171	KIT K173	KIT K173		KIT K173